



LIGHT EMITTING HOMOPOLYMER FOR OLED & PLED DEVICES

ADS200RE

INTRODUCTION

American Dye Source, Inc. offers from gram to kilogram quantity conjugated polymers, which are derived from benzothiazole, carbazole fluorene, phenylene, phenylene-vinylene and thiophene. We supply these products in solid forms or in solutions.

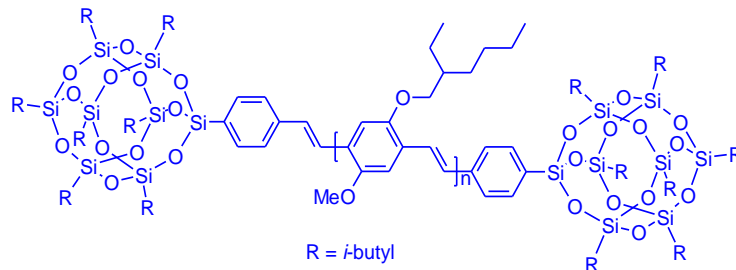
DESCRIPTION

ADS200RE is Poly[2-methoxy-5-(2-ethyl-hexyloxy)-1,4-phenylenevinylene] end capped with POSS. It is also called **MEH-PPV**. ADS200RE is highly soluble in toluene, chlorobenzene, tetrahydrofuran, and chloroform. ADS200RE can be used for fabrication of light emitting displays, organic solar cells and biosensors.

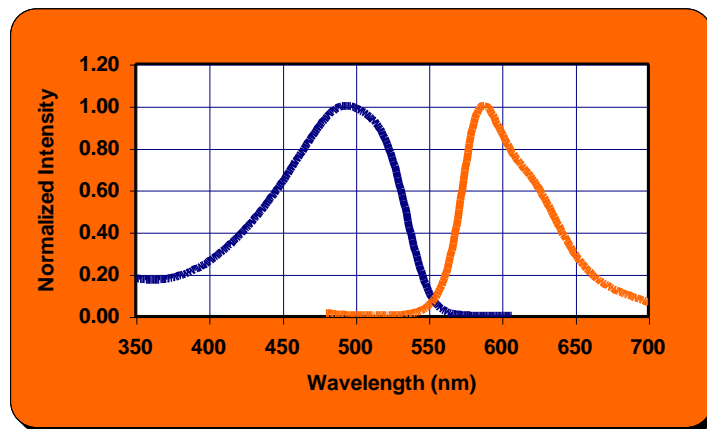
TECHNICAL DATA

- ❑ Appearance: Orange fiber or flake
- ❑ Molecular weights: > 100,000
- ❑ Absorption maximum: 490 nm
- ❑ Photoluminescent maximum: 585 nm
- ❑ Storage: under Argon atmosphere

STRUCTURE



SPECTRA



Absorption and emission spectra of ADS200RE film on ITO glass.

CONTACT INFORMATION

American Dye Source, Inc.
 555 Morgan Boulevard
 Baie d'Urfe, Quebec, Canada H9X 3T6
 Tel. 514 457-0070
 Fax 514 457-0071
 Website: www.adsdyes.com
 E-mail: info@adsdyes.com

DISCLAIMER

The information in this bulletin is believed to be accurate, but all recommendations are made without warranty since the conditions of use are beyond the control of American Dye Source, Inc. The listed properties are illustrative only, and not product specifications. American Dye Source, Inc. disclaims any liability in connection with the use of the information, and does not warrant against infringement by reason of the use of its products in combination with other material or in any process.