

ALCOHOL SOLUBLE LIGHT EMITTING POLYMER **ADS180BE**

INTRODUCTION

American Dye Source, Inc. offers from gram to kilogram quantity conjugated polymers, which are derived from benzothiazole, carbazole fluorene, phenylene, phenylene-vinylene and thiophene. We supply these products in solid forms or in solutions.

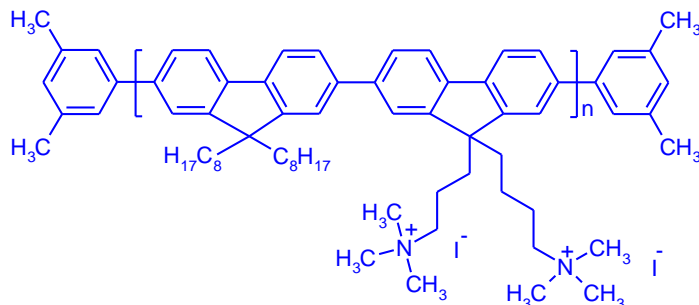
DESCRIPTION

ADS180BE is poly[(9,9-di(3,3'-N,N'-trimethylammonium)propylfluorenyl-2,7-diyl)-alt-(9,9-dioctylfluorenyl-2,7-diyl)] diiodide salt end-capped with dimethylphenyl. ADS180BE is highly soluble in alcohol (with 1% DMF in solution). ADS180BE can be used for fabrication of light emitting displays, biosensors, as well as many other applications.

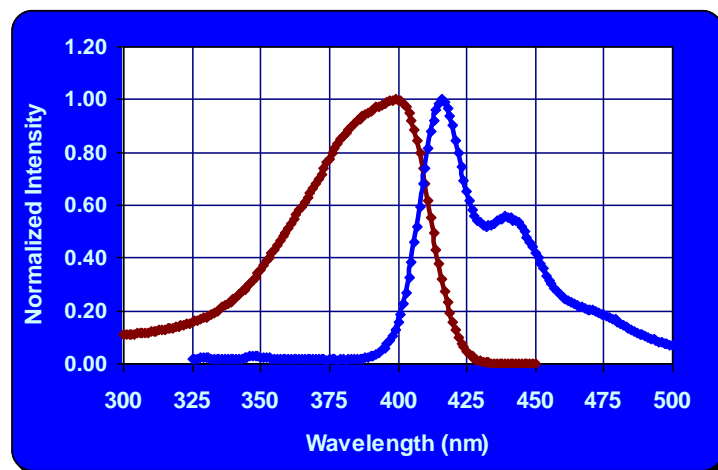
TECHNICAL DATA

- Appearance: Brown Powder
- Molecular Weight: 15,000 – 75,000
- Absorption maximum: 398 nm
- Photoluminescent maximum: 418 nm
- Storage: under Argon atmosphere

STRUCTURE



SPECTRA



Absorption and photoluminescent spectra of ADS180BE in methanol

CONTACT INFORMATION

American Dye Source, Inc.

555 Morgan Boulevard
Baie d'Urfe, Quebec, Canada H9X 3T6
Tel. 514 457-0070
Fax 514 457-0071
Website: www.adsdyes.com
E-mail: info@adsdyes.com

DISCLAIMER

The information in this bulletin is believed to be accurate, but all recommendations are made without warranty since the conditions of use are beyond the control of American Dye Source, Inc. The listed properties are illustrative only, and not product specifications. American Dye Source, Inc. disclaims any liability in connection with the use of the information, and does not warrant against infringement by reason of the use of its products in combination with other material or in any process.